

## WILLIAM CHARLES DALE 1854-1924



Figure 1 - William Charles Dale

**William Charles Dale** was born on 13 September 1854 in Californian Gully<sup>1</sup>, Bendigo, Victoria, Australia (reg no 5761/1854). He was baptised at the St Peter's Eastern Hill, Melbourne on 22 December 1854.

He was the first-born son of Charles Hawkins Dale and Eliza Mary Bolton Stow, who had married on 8 June 1853. Charles had emigrated to Victoria between 1848 and 1849 from Gravesend. Eliza had followed later. Charles was known to be a miner and it is thought he was chasing the gold in the Victorian goldfields.

When William was aged 8 years, accompanied by his mother and three younger siblings, Eliza, Lydia and Rose, they went to Dunedin when their father Charles called for them six months after leaving them in Victoria while he found accommodation and settled in.

When they arrived in Port Chalmers, they were met by Charles and escorted to their new home in Central Otago goldfields.

William travelled back to Victoria and married **Sarah Jane OTTREY** in 1883 in Castlemaine, Victoria, Australia. Sarah was born on 29 January 1860 in Muckleford, Victoria, Australia, and died in January 1946 in Rosedale, Tapanui at age 86 years. She was buried on 7 January 1946 in Tapanui cemetery, New Zealand, with her husband. (See Certificate of Marriage).



Figure 2 - Sarah Jane Ottrey

---

<sup>1</sup> <https://www.victorianplaces.com.au/california-gully>

Here is a typed transcript of the marriage certificate:

**In the Colony of Victoria**  
**CERTIFICATE OF MARRIAGE**

District of Castlemaine, No. in Register 30

On *November 12<sup>th</sup> 1883* at *Walmer Independent Church near Castlemaine*

Marriage was solemnized between Us according to the *xxx of the Independent Churches*

Signature *William Charles Dale*

Residence Present *Castlemaine, Victoria*  
Usual *Tapanui, Otago New Zealand*

Age *Twenty-nine (29)*

Rank or Profession *Butcher*

Condition *Batchelor*

Birth Place *Sandhurst, Victoria*

Parents' Names and Rank or Profession:

Father *Charles Hawkins Dale, Labourer*

Mother *Eliza Dale*

(Maiden name *Stowe*)

Signature *Sarah Jane Ottrey*

Residence Present *Muckleford*  
Usual *Chapel Street*

Age *Twenty-three (23)*

Rank or Profession *Assistant in shops*

Condition *Spinster*

Birth Place *Muckleford near Castlemaine*

Parents' Names and Rank or Profession:

Father *Thomas Ottrey, Farmer*

Mother *Mary Ottrey*

(Maiden name *Wake*)

I *William Henry Lawrence* being *Independent Minister* do hereby certify that I have this day, at *Walmer, Independent Church, Castlemaine*, duly celebrated Marriage between *William Charles Dale of Tapanui New Zealand, Butcher*, and *Sarah Jane Ottrey of Muckleford Castlemaine, Shop Assistant* after notice and declaration duly made and published as by law required

Dated this *Twelfth day of November 1883*

Signed by Minister *William Henry Lawrence* and two witnesses [names unreadable]

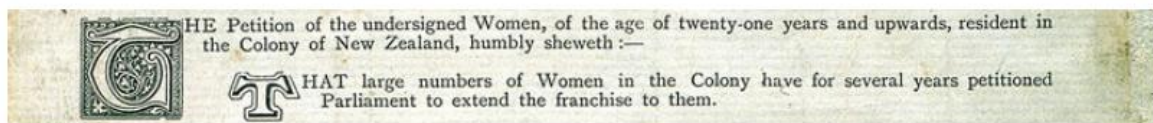
In a letter from Campbell's Creek to Eliza in Otago dated 24 July 1883, niece Alice Marriot says:

*Dear Aunt Eliza*

*I now take the pen in hand to write to you as mother wishes me to do it as she has not heard of you for so many years until the other week we were greatly surprised to see Willie walk in, he told us how you were getting on, he stayed from the Wednesday, he came till the following Tuesday arriving for .. to come and he came just in time to be too late, for we had gone about 2 hours, we wanted him to stay but he seemed to want to go, and he did not know what direction locally ... was going to he said he might go to Mclvor or Bendigo, he had not made up his mind. Willie was disappointed at not seeing him, he came on Tuesday for 2 or 3 hours and he spent a few days with his father in law and then he came the night before he went away and slept at his place, that was Thursday and he went up to Deniliquin the next morning shearing, and when he comes back, he is going to get married in Castlemaine. We have not seen the intended young lady but we are going to see her when she comes home from Melbourne. We know some part of her friends. Martha my eldest single and myself is got an invitation to the wedding. My eldest sister is married and has got a little son about 17 months old. Willie has promised to write to us when he gets into work up country.*

*He was greatly taken up with the garden and he says he would like to spend his money now ... till you when he comes home father was pleased to see Willie he says he looks a very promising ... but you ... not call him or else he might be flattered. Mother wants to know what you have of Grandmother Stow likeness as she would like to have one of everyone else ... if you will find a great likeness ... [ unable to read from here on ]*

Sarah was one of the thousands of New Zealand women who signed the **Suffrage Petition** in 1893<sup>2</sup>:



Surname: Dale  
Given names: Sara  
Given address: Tapanui

Sheet No: 100  
Town/Suburb: Tapanui  
City/Region: Otago

<sup>2</sup> <https://nzhistory.govt.nz/suffragist/sara-dale>

The couple had six children: **Charles, Edward Thomas, Mary, William, Rose, and Frances.**

1. Charles, 1884-1943
2. Edward Thomas, 1886-1917
3. Mary, 1888-1971
4. William, 1890-1961
5. Rose, 1892-1953
6. Frances, 1894-1976

William and Sarah were well known in Tapanui for their gardening qualities. They spent their entire family life in the Tapanui area, having moved there in 1884 after their marriage.



*Figure 3 - Family photo: Sarah Jane (Ottrey) Dale and William Charles Dale and family - Frances on knee, Charles (rear), William in front, Mary in the middle, Rose in front, Edward Thomas rear. c.1896-7 Tapanui.*

## 1. Charles Dale 1884-1943



Figure 4 - Charles DALE

Charles was the first-born son and eldest child of William and Sarah, who was born on 15 November 1884 and died in Greymouth on 24 July 1943 at the age of 59 years. He attended Tapanui School from 8 September 1890 until 1 December 1898. Nothing further is known about Charles regarding what he did and where he lived.

Charles was buried on 24 July 1943 in the Karoro Cemetery, in Greymouth, in the Old Church England Division, plot 870.

## 2. Edward Thomas Dale, 1886-1917

Edward was the second son of William Charles Dale and Sarah Jane Ottrey. He was born on 17 April 1886 in Tapanui.



Figure 5 - Private Edward Thomas DALE

His service number was #2058<sup>3</sup> and when he enlisted on 21 May 1916 he was recorded as being resident in Hughenden, Queensland, out west from Charters Towers. His father was listed as William Charles Dale of Tapanui, Otago. He was aged 29 and single on enlistment, an engine driver/civilian and held the rank of Private. His religion was listed as Church of England. He had been in Australia since he was 24 years.

Edward joined the Australian Imperial Force, 41<sup>st</sup> Battalion, 3<sup>rd</sup> Reinforcements and embarked from Brisbane, Queensland on 7 September 1916 aboard the “*Clan Macgillivray*” bound for Europe. He disembarked at Plymouth on 2 November 1916 and was marched into Sling. From there after training, he proceeded overseas to France on 20 December 1916.

The photo shown has the following description:

### Description

Studio portrait of 2058 Private (Pte) Edward Thomas Dale, 41<sup>st</sup> Battalion. Originally from Tapanui, New Zealand, Dale was an engine driver at Hughenden, Qld, before he enlisted in May

1916. Pte Dale embarked on HMAT “*Clan McGillivray*” with the 3<sup>rd</sup> Reinforcements on 7 September 1916 and by late December 1916 was with his unit in France. Pte Dale was killed in action at Passchendaele on 10 October 1917.<sup>4</sup>

<sup>3</sup> <https://www.aucklandmuseum.com/war-memorial/online-cenotaph/record/80388>

<sup>4</sup> <https://www.awm.gov.au/collection/C1218662>



Edward is reported as being “killed in action” on 10 October 1917 – this would have been during the 3<sup>rd</sup> battle for Ypres, at Passchendaele. He was awarded the British War Medal and the Victory Medal. See listing on NZ War Graves Project website.<sup>5</sup>

There is no known grave for Edward but he is remembered on a memorial at Menin Road South Military Cemetery, Leper, West-Vlaanderen, Belgium. A military note says “Place of burial, ¾ of a mile W.N.W. of Zonnebeke Village (Map reading D.20d.9.9), Certified by Div. Burials Officer, 3<sup>rd</sup> Aust. Div. Fanquembegues. Etaples 13.11.17.”

He is also remembered online on the ww1qld website and on [www.awm.gov.au](http://www.awm.gov.au) P06344.001



The 41st Battalion was raised at Bells' Paddock Camp in Brisbane's suburbs. It comprised recruits drawn from Queensland and the northern rivers of NSW. It was to be the first battalion of the 11th Brigade drawn from the 'smaller States'. Its colour patch tells the story; the elliptical shape denoted the 3rd Division, the light blue lower half the third brigade of the division and the black upper half the first battalion of that brigade.

Compared to some AIF battalions, the 41st's experience of the battles in Belgium during 1917 was relatively straightforward. It had a supporting role at Messines on 7 June, captured its objectives at Broodseinde on 4 October with little difficulty, and was spared the carnage of Passchendaele on 12 October.

This video on [YouTube](https://www.youtube.com/watch?v=8RtiSMjv-Y8) shows the AIF in action in 1917<sup>6</sup>.

Cinematographer: George Hubert Wilkins, made in October 1917. This silent film deals with the AIF operations during the Third Battle of Ypres in the 'Ypres Salient' east of the town in September and October 1917. This film deals with the participation of the Australian troops in the Third Battle of Ypres during the autumn of 1917. The scenes include Australians preparing for the attack; being reviewed by Sir Douglas Haig before going into action; shells falling amongst the ruins of Ypres and then shows the battlefields over which Australians fought and incidents connected with the fighting.

The 41st participated in its last major action of the war between 29 September and 2 October 1918 as part of the Australian-American operation that breached the formidable defences of the Hindenburg Line along the St Quentin Canal. The battalion was out of the line when the war ended, and was disbanded in May 1919.

You can read the extensive story of the Third Battle of Ypres on the [ANZAC Portal](http://www.anzacportal.com) website.

---

<sup>5</sup> <https://www.nzwargraves.org.nz/casualties/edward-thomas-dale>

<sup>6</sup> 'Fighting in Flanders' (The Ruins of Ypres, 1917) [AWM F00056]  
<https://www.youtube.com/watch?v=8RtiSMjv-Y8>

No Enquiry.

A.I.F. 41.

DALE, C.T. 2058.

K. October 10th, 1917.

Place of burial,  $\frac{3}{4}$  of a mile W.N.W. of Zonnebeke  
Village (Map reading D.20d.9.9)

SA.

Cert. by Div. Burials Officer,  
3rd Aust. Div. Fauquembergues.

Etaples  
13.11.17.

Edward Thomas Dale is remembered on his family headstone.



Figure 6 - Headstone - William Dale, Sarah Dale, Edward Thomas Dale (memorial), Rose Dale, Frances Dale





*Figure 7 - Edward Thomas Dale and mother Sarah Jane Dale, at Charters Towers 1912*



*Figure 8 - Edward Thomas Dale and Mary Dale, c. 1890*

### 3. Mary Dale, 1888-1971



Figure 9 - Mary Dale

Mary Dale was born on 1 March 1888 in Tapanui, and died on 24 April 1971 aged 83 years in Ohope, Bay of Plenty. She is buried in Hillcrest Cemetery, Whakatane, Block F plot 32.

In 1920, she married **John Laird Llewellyn CLOUGHER**, who had fought in World War I. (See his story below). He died on 18 May 1949 aged 57 years, and is buried in Hillcrest Cemetery, Block F, plot 15.

They had three children: **John Laird CLOUGHER** 1921-1971 who fought in World War II, **Arthur Tom CLOUGHER** 1925-2008, and **Constance Mary CLOUGHER** 1928-1949. (See John's story below).

### John Laird Llewellyn Clougher 1891-1949



Figure 10 - John "Jack" Laird Llewellyn Clougher

John "Jack" Laird Llewellyn Clougher was born on 15 December 1891 in Mayo, Ireland.

John Laird Llewellyn Clougher had a long and distinguished service with the New Zealand Army, starting as a Cadet at Nelson College from 1907-1909. Following that he joined the Wakatu Mounted Rifles - Territorials between November 1909 and August 4<sup>th</sup>, 1914, before he enlisted for active duty on 16 August.

John served in World War I, service number #7/181 with the 10<sup>th</sup> (Nelson) Mounted Rifles. He listed his mother Mrs Constance Maud Clougher of Korere, Nelson as his next of kin. When he enlisted he was a single man, a farmer and was 22 years 8 months of age. He left New Zealand on 16 October 1914 bound for the Middle East<sup>7</sup>. He was in Alexandria, Egypt at the beginning of December 1914 but his service file says he was wounded in the Dardenelles on 20 May 1915 and admitted to hospital. After leave, he returned to active service on 11 January 1916. He also suffered from Influenza in October 1914 and acute tonsillitis in February 1915 which required hospitalisation.

<sup>7</sup> Read a Diary Transcription of the voyage from 16 October 1914-2 December 1914 online by the radio operator: <http://ww100.nelsonmuseum.co.nz/diaries?diaryId=6>

On 16 August 1914 he was listed as a Trooper, and on 28 June 1915 he was wounded, and the local newspapers reported the incident on 3 July 1915:

July.

Trooper John Laird Clougher, who was wounded at the Dardanelles, is the eldest son of the late Rev. J. Clougher and Mrs Clougher, who came to New Zealand on her husband's death and took up "Glanbydan." Korere, Nelson. Mr Clougher, who was managing for his mother, volunteered as soon as he knew that war was declared. He is a splendid rider, and is well known in Nelson.

---

He was wounded slightly again on 28 August 1915. Again the local newspapers reported the incident on 2 September 1915:

Trooper J. L. Clougher, of the Canterbury Mounted Rifles, who has been wounded a second time, is a son of Mrs. Clougher, of Rainy River, who is well known in connection with missionary work. Trooper Clougher left New Zealand with the Main Expeditionary Force.

On this occasion he was admitted to the Clearing Hospital, Endsleigh, and embarked for England on the H.S. "Intalia" on 8 September, and then to the base Depot at Hornchurch.

He wrote to his mother from the Floriana Military Hospital in Malta on 13 August. Read this transcript which was published in the Nelson Evening Mail on 6 November 1916:

#### **MORE TERRIBLE THAN IN FRANCE**

**THE FIGHTING AT GALLIPOLI - MAORIS IN ACTION.** The following extracts are taken from a letter written by Trooper J. L. Clougher to his mother Mrs C. M. Clougher. Trooper Clougher left with the main body of New Zealanders, and has been wounded three times. He writes from the Floriana Military Hospital, Malta, under dated August 13th: "I have struck a good patch, and am very well off here — well waited on and with a Harley Street specialist as a doctor. The nurse tells me he never uses a knife under £100 fee! It's a beautiful place, the only drawback being want of news from outside. We buried 60 coming over in the boat from the Peninsula. and they reckon our casualties were 20,000 killed and wounded. I am going under the X-rays tomorrow to see what damage is done to my leg. I had a narrow chance of losing it, as my pants were riddled with bullets, which did not touch me. It was a matter of inches. My poor, dear sergeant, the finest chap in our regiment, a corporal, and two others who were by me, were killed, and I was left. The corporal was only wounded in the same place as myself — only worse hit — his leg smashed. Sergeant Abraham was shot through the stomach in about three places, and I held his hand while

he died in dreadful agony; but never complained. We took the gun that shot us, and bayoneted, everything in the trench, never firing a shot. We had empty rifles, as it has been proved that if you rush the Turk with a bayonet he will either surrender or run; but if you stop to shoot he will shoot back; so it was all bayonet work, and blood ran like water.

The Maoris went at it like fiends, yelling like mad 'Komati! Komati! | Dead Turks were lying two and three deep in some of the trenches where our artillery had got on to them.

The English Tommies say it's more terrible here than it is in France. They made a big landing on our left and got about 40,000 men ashore to take the Turks on their right flank. It was one of the decisive battles of the war, as now we can do without Achi Baba. It's too awful to describe; the ground littered with dead and dying. Two Ghurkas found me and carried me in after I had been lying out for 24 hours without food or water; but I am one of the lucky ones."

August 31st - "Just a short letter to tell you I've been operated on, and had a bullet taken out of my ankle, and the doctor has sent me home to England for a spell, as my ankle won't go down. There are a lot of wounded men, and if it takes some time for them to get well they are sent on to England. I should have a good time if the enemy does not torpedo the hospital boat. there are some beautiful old churches here, where St Paul used to preach to the people."

John returned to active service on 11 January 1916 and was appointed temporary Sergeant on 31 January. He then spent most of his time with the 12<sup>th</sup> Battery of the NZ Field Artillery, part of the 3<sup>rd</sup> Brigade as a Gunner, in France.

When the war was over, John Clougher returned to New Zealand on the "Willochra" on 18 March 1918 and was on leave until 9 December 1918 when he was discharged "on termination of period of engagement". A note on his file says that he was suffering from "shell shock". This is not surprising considering he spent most of his active service in a Battery unit. His last known rank was Lance Corporal.

Disease: Shell-shock.

This man was a 'Maori 2<sup>nd</sup> Lt' man.  
He was 'killed' here & has  
suffered from 'Shell-shock' since.  
This happened at France on Sept. 25  
1916.  
In addition he gets shakiness & nervous.  
Heart - they normal.



	C.M.R. Posted Tpr.	16.8.14.
	Wounded	28.6.15.
	Wounded Slightly 2nd Occasion	28.8.15.
34)	7/181 J.L. Clougher admitted Clearing Hospital, EASTLEIGH. Progressing favourably.	(25.9.15)
57)	Embarked for England. H.S. "Intalia" Sept. 8th..	28.9.15.
	Roll. Base Depot HORNBURCH. Ret to Active Service.	11.1.16.
	ails C.M.R. Appointed T/Sgt.	31.1.16. P.2.O., No.1. 11.3.16.
79.	London. Reports with UNIT., No casualty reported since arrival in FRANCE.	6.2.16.
	F.A. Trans 12th Battery N.Z.F.A. 3rd Brigade. (Gnr)	25.3.16 D.O. Part 2. No 7.4/4.16.
	12th Battery 2nd Bge F.A. Relinq., Temp Appointment Sgt. (Gnr)	10/3/16. P.2.O. No 3. 6/4/16.
	Div Art 3rd Brigade 12th Battery Appointed A/Bomb.	29.10.16. p.2.30. Rowen. 29/11/16. BS
	( Returned to N.Z. on DUTY & FURLOUGH . L/Cpl.	1.2.18. B.R. 36
		27110

His Army record on Archway is: [CLOUGHER, John Laird - WW1 7/181 - Army \[Original Paper Personnel File\]](#)

He had active service of 4 years 69 days from 16 August 1914 until 9 December 1918, and he had also served with the Territorials for 4 years 9 months from November 1909 to August 4<sup>th</sup> 1914.

John married **Mary Dale**, daughter of William Charles Dale and Sarah Jane Ottrey, in 1920. They had 3 children: **John Laird Jnr**, b. 29 August 1921 in Hamilton, **Arthur Tom** b. 25 May 1925, and **Constance Mary**, b. 24 February 1928.

**John Laird Llewellyn [Jack] Clougher** died in Green Lane Hospital Auckland 18 May 1949 aged 59 years. At the time he resided in Whakatane and is buried at Hillcrest Cemetery next to his daughter Constance Mary who had died 17 days before - Plot 15, Block F, Hillcrest Cemetery, 80 Ohope Rd, Whakatane along with wife Mary, died 25 April 1971 aged 83, buried Hillcrest, F32.

7/181 John Laird Clougher

Further to this office memo of the 26th ultimo, and in reply to yours of the 6th instant, please find the following statement of the service of the above named with the N Z E F.

Attested 16.8.14.  
Embarked for service  
overseas 16.10.14.  
Ret to N Z per "Willochra" 18.3.18. (on duty furlough)  
Given Leave without pay from 24.4.18. to 9.12.18.  
Ordered to report at Featherston Camp 20.4.18.  
Discharged on termination of period of  
engagement 9.12.18.

Next of kin:-

Mrs C M Clougher (M)  
 Korere  
NELSON

**Record from Nelson Museum<sup>8</sup> website:**

(1891-1949)

Occupation: Farmer

Rank: Bombardier

Service Number: 7/181

Force: NZEF

**Family**

John Laird Llewelyn (Jack) b.15 December 1891, son of Rev. Joseph Laird Clougher and Constance Maude (nee Richardson) on 17 March 1884.

Other known children were:

Arthur born 22 August 1868; died 29 December 1931

Marie Louise [known as Wesa] born 18 June 1890

Ethel ?

There would seem to be another daughter known as Tot or Totty.

On the death of Rev. Joseph in 1904 Constance took the family to New Zealand where they settled on a farm in Rainey River, Korere.

Jack was educated at Nelson College and was in the Nelson College Rifle Cadets 1907–1909. On leaving school he was active in Wakatu Mounted Rifles, territorials 10th (Nelson) Mounted Rifles 1909–1914 and Tapawera Mounted Rifles.

He lived and worked as a self-employed farmer managing “Glanbrydan” at Korere for his Mother.

**1914**

Jack enlisted at Korere and attested on 8 August at Nelson.

Based on military records and letters home:

16 October: Embarked as part of Canterbury Mounted Rifles with the Main Body from Lyttleton for Wellington on H M S Minotaur. They were on their way to Hobart.

1 November: Left Albany joined by Australian ships and on the way to Suez.

11 November: Listening in on radio heard the battle going on between ship Sydney and German ship Emden at the Cocos Islands.

25 November: Dropped anchor in Aden, went across to S S Arawa for spares; saw German prisoners peeling spuds while officers playing cards.

**Egypt**

1 December: Arrived Suez travelling up the Canal, on to Port Said and then Alexandria.

**1915 Zeitoun Camp**

---

<sup>8</sup> <http://ww100.nelsonmuseum.co.nz/character?profileId=9> John Laird Llewellyn Clougher

6 February: Reports the Turks have started to shell positions and Nelson Infantry have been engaged.

They are out in the desert, the reinforcements and Australians have arrived to join them, food improved. 40,000 men drilling together infantry, cavalry and artillery.

12 May: Left horses in Egypt, sailing for ANZAC Cove 2,000 men on board, Canterbury and Wellington Regts.

They heard 18% Otago Regt killed and they know they will see some awful sights.

13 August: Gunshot wound to the ankle, embarked Dardanelles by hospital ship *Dundee Castle* to Malta; admitted to Floriana hospital where ankle was operated on. On the way 60 buried at sea; over 20,000 killed or wounded.

8 September: Embarked for England on H S "*Istalia*" for Endsleigh Palace Hospital, London for further treatment on his ankle.

### **1916 France**

January: He returned to active service. In March transferred to 12th Battery N.Z.F.A as gunner.

29 September: Had been partially buried with sand bags when a shell exploded close to their gun pit, suffering some shaking and shell shock.

1 December: Winter is on them and its difficult keeping warm.

### **1917**

17 June: Somewhere in Belgium.

Apologises for not writing as they had to prepare large quantities of ammunition, digging dug outs and gunpits for the taking of...censored...

### **1918**

Jack returned to NZ and from 24 April he was employed at Featherston Camp until his discharge on 9 December 1918.

### **Post-War**

1920: Living on farm at Korere, Jack married Mary Dale on 20 October in Hamilton. Mary was born 1 March 1888 and died 25 April 1971.

John Laird Llewellyn Clougher died 18 May 1949 in Green Lane Hospital, Auckland, and is buried at Hillcrest Cemetery, Whakatane next to his daughter Constance Mary who had died 17 days before.

Read the full life story on the Nelson Museum website.<sup>9</sup>

---

<sup>9</sup> <http://ww100.nelsonmuseum.co.nz/media/content/bios/Clougher%20John%20Laird%20Llewellyn.pdf>

### John Laird Clougher 1921-2012

John Laird Clougher was born on 29 August 1921. His father was John Laird Llewellyn Clougher #7/181 who served in World War I. He was William Charles and Sarah Jane Dale's grandson.

John enlisted in 1942 as a single man, service number #63084 citing his next of kin as Mrs M Clougher of Ohope, Whakatane.

John Clougher's name appears in a newspaper article entitled "More Recruiting – Thirty-One Men pass fit – Further Whakatane Response. The following men passed fit at the Medical Board held on Saturday: John Laird Clougher."<sup>10</sup> *Bay of Plenty Beacon*, Volume 2, Issue 189, 22 July 1940.

His occupation on enlistment was a Shop assistant of Gore, Southland. He fought in the North African campaign with the Second New Zealand Expeditionary Force as a private, and his last known rank was a Corporal.

Unfortunately World War II records have not yet been released. By family request only.

John was engaged to Elva May Clarke, eldest daughter of Mr F. A. S. Clarke of Whakatane as announced on 19 June 1946 in the *Bay of Plenty Beacon*<sup>11</sup>. However it appears this marriage did not go ahead, but we don't know why as John Laird Clougher is recorded as marrying Margaret Ann Hunt on 27 December 1954 in Goulburn, Australia.

John died on 15 December 2012. An online obituary<sup>12</sup> for John Laird Clougher states:

**CLOUGHER, John Laird (Jocko).** - 29.8.1921 - 15.12.2012 2nd NZ Divn. Infantry Intelligence No 63084. Beloved and loving husband of Margaret, much loved father and father-in-law to Simone and Sandy, Gerard, Justin and Kerry, Matthew and Jane. Loving and loved grandfather of Christopher, Singrid, Scott, Daniel, Eden, Ariel, Zoe, Graeme, Lucy, Astrid and Flynn, great grandfather of Kai. We will celebrate John's life at 'Joppa' Tuesday December 18, 2012, 6pm. All welcome. 'Home is the sailor Home from the sea and the hunter Home from the hill.'

---

<sup>10</sup> *Bay of Plenty Beacon*, Volume 2, Issue 189, 22 July 1940.

<sup>11</sup> ENGAGEMENT. BAY OF PLENTY BEACON, VOLUME 9, ISSUE 88, 19 JUNE 1946

<sup>12</sup> <https://www.legacy.com/obituaries/name/john-clougher-obituary?pid=161769818&fbclid=IwAR0-afF3Fj-QSCo3AZYNIBnTf-VPIuAJOXORMNNAah3PSIGmgo0qNPQH0Y>

## 4. William Dale 1890-1961



Figure 11 - William Dale

William Dale was William and Sarah Dale's 4<sup>th</sup> child and 3<sup>rd</sup> son. He was born on 22 February 1890 and started school on 25 February 1895 in Tapanui, finishing in 1901.

He was in Tapanui when he enlisted in the Army, Service number #61238, citing his mother Mrs Sarah Dale of Tapanui as his next of kin. His occupation was Shearer/Civilian. He enlisted for the duration of the war.

William embarked on 16 November 1917 from Wellington to Liverpool on the "RMS Tahiti" as a Private, arriving on 7 January 1918. He had joined the Auckland Infantry Regiment – A Company. As Transport no. 97 the "Tahiti" carried the 31st Reinforcements to the United Kingdom in November 1917. He was marched into Sling and then left for France on 20 March 1918 and arrived at Etaples where he joined the 1<sup>st</sup> Battalion, Auckland Regiment on 1 April 1918.

From his army service record, it appears William did not see active service on the front line.

William left for New Zealand after the war on the "Chupra" from London on 8 June 1919 and was discharged from service on 25 August 1919.

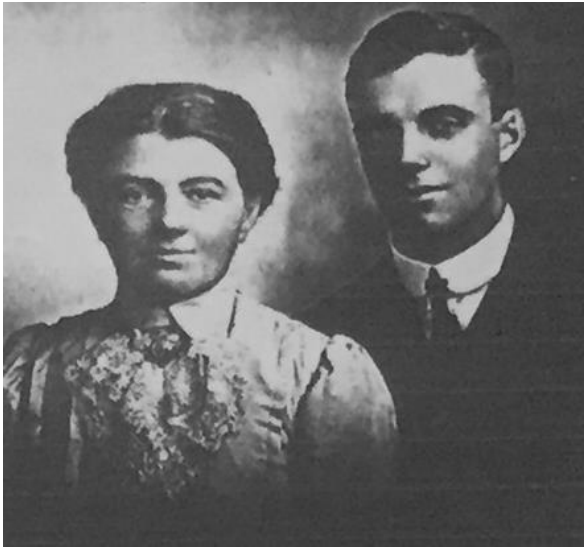


His Army service files are available on Archway: [DALE, William - WW1 61238 - Army](#)

William married **Florence Evelyn SHEDDAN** on 28 April 1926 in Tapanui. Florence was born on 16 May 1895 in Tapanui. Together they had 4 children (2 girls and 2 boys) - **Annette** 1926, **David William** 1931, **Kevin Charles** 1936 and **Maureen** 1937.

William died on 22 April 1961 in Dunedin aged 71 years and is buried at Andersons Bay Cemetery, Block 235, Plot 68 with his wife Florence Evelyn Dale (nee Sheddan) who died aged 88 years on 29 January 1984.





*Figure 12 - Sarah Jane Dale and son William*



*Figure 13 - William Dale*

## 5. Rose Dale, 1892-1953



*Figure 14 - Frances Dale (back), with sister Rose Dale (front)*

Rose was born on 26 April 1892 in Tapanui, and died on 15 March 1953 aged 60 years. She is buried in Tapanui with her parents. Rose started school in Tapanui on 26 April 1897. She was a Plunket nurse. She did not marry or have any children.

## 6. Frances Dale 1894-1976



Figure 15 - Frances DALE

Frances was born on 8 April 1894 in Tapanui. She was a well-known music teacher. Frances attended Tapanui school from 10 April 1899 until 9 September 1906. She is mentioned on page 43 of G.J. Smith's book "Tapanui turns One Hundred" – "Miss Dale, a resident of the town until recent years, will long be remembered for the long arduous hours she spent playing the piano for the motion pictures before the Talkies came in."

Her death notice read: "On August 23, 1976, at Gore, dearly loved youngest daughter of the late William and Sarah Dale and loved sister of the late Charles, Mary, Thomas, William and Rose."

There is a memorial at All Saints Anglican Church on the corner of Forest and Kent Streets, which says: "To the glory of God in memory of Frances DALE 1894-1976." Frances died on 23 August 1976 aged

82 years in Gore and is buried in Tapanui with her parents. She did not marry or have any children.



Figure 16 - Headstone - William Dale, Sarah Dale, Edward Thomas Dale (memorial), Rose Dale, Frances Dale

**William Charles Dale** died in 22 March 1924 in Rosedale, Tapanui at age 69 years. He was buried on 23 Mar 1924 in Tapanui cemetery, Otago, New Zealand (Block 2, Plot 9). At the time of his death he was a driver.

Also buried in the same plot are his wife Sarah, and daughters Rose and Frances, along with a memorial for his son Edward Thomas Dale who was killed during the Battle of Passchendaele on 9 October 1917 aged 31 years. (See Obituaries below).

### Obituary of Mr William Charles Dale

The death occurred at his residence "Rosedale" Wooded Hill on Friday evening last of Mr William Charles DALE, as the result of a stroke which the deceased sustained a few days previously when engaged in erecting a fence. The late Mr Dale was born in Victoria and came to Otago at the time of the Gold Rush. His parents were natives of Margate, Kent. After some wandering, the Dales settled on a small plot near Beaumont, close to Bellamy stock yards, at the junction of the track to Tuapeka Mouth via the west. When able to work (and boys toiled early in those days) William was

employed at butchering and station jobs from cowboy to shearing. After marrying Miss Ottrey, the young couple took up their residence at the east end of Bushy Hill Street, where gardening was enthusiastically followed by both the young people for some years. When Brooksdale estate was finally cut up for closer settlement a section was secured on Wooded Hill, where an orchard followed as a matter of course with a good flower plot for Mrs Dale. A family of six was reared, of whom Tom made the supreme sacrifice in the Great War.

A similar death notice and obituary appeared in the *Tapanui Courier* on 26 March 1924 (not available online):

**DEATH**, Dale, on 21<sup>st</sup> March at "Rosedale" Tapanui. William Charles beloved husband of Sara Dale in his 70<sup>th</sup> year. Obituary: William Charles Dale at this residence "Rosedale", Wooded Hill on Friday evening as a result of a stroke which the deceased sustained a few days previously when engaged erecting a fence. Mr Dale had a serious illness some time ago and on the last occasion little hope was entertained of his surviving. The late Mr Dale was born in Victoria and came to Otago at the time of the gold rush. His parents were natives of Margate, Kent. After some wandering the Dales settled on a small flat near Beaumont close to Bellamy stock yards at the junction of the track to Tuapeka Mouth via the west. When able to work (and boys toiled early in those days) William was employed at butchering and station jobs from cowboy to shearer. When of mature age shearing was followed in Australia and New Zealand for 40 years. Marrying Miss

Ottrey the young couple took up their residence at the east end of Bushy Hill Street where gardening was enthusiastically followed for some years by both of the young couple. Grapes and other fruits were soon harvested and horticultural work was pursued as a hobby. When Brooksdale Estate was finally cut up for closer settlement a section was secured on Wooded Hill, where an orchard followed as a matter of course with a good flower plot for Mrs Dale. Fruit trees were obtained from Victoria and the Cox's Orange applies in the collection were a marvel of excellence. A good judge classed them A1. Mr Dale became a member of the Lodge Hercules and passed through the worshipful Master's chair some years ago. As a member of the Craft he was greatly esteemed and his enthusiasm and ability in Lodge working gained him the admiration of Free Masons. He was also an adherent of All Saints church and when funds were needed for a

clergyman's residence canvassed the district successfully. The class of workmen that the late William Dale belonged to from the sixties up till his death was of the best – able men, who could do anything and worked hard for remuneration that was often small after the flush of Otago gold diggings went past. An able-bodied man he was much in demand as shearer (an art at which he was a 'ringer' and he could tell many interesting experiences when the blade experts 'crossed the pond' for the big sheds in Australia. In later years he did gardening or other work – nothing came wrong

to him. For some years when sawmilling was the principal industry he was contract bush feller at Manse Bush mill and now he has gone to his rest after strenuous years of toil. A family of six were reared of whom Tom made the supreme sacrifice in the Great War. The survivors are Charles (West Coast), William (at home), Mrs Clougher (Hamilton), Rose (hospital nurse), and Francis (music teacher) and the widow and family have the sympathy of a large circle of friends. Funeral took place on Sunday when there was a very large following from all parts of the district.

According to his probate records, the value of William's estate when he died was £3,122.13.10. This consisted of land, farming stock and implements, cash in the bank, shares and other household effects.

#### **Obituary of Sarah Jane Dale**

As briefly recorded in last issue, the passing of Mrs Sara Jane Dale has removed from our midst a highly respected resident who has been associated with the township for sixty-three years.

Born at Muckleford, Castlemaine, Victoria, 87 years ago, where she received her education, Mrs Dale was the third daughter of the late Thomas and Mary Ottrey, and was the last surviving member of a family of ten. After spending her younger days as a shop assistant in Melbourne, deceased came to New Zealand at the end of 1881, being employed in the Milton and Tapanui districts for twelve months. She then went back to Australia for another year, where she married Mr William Charles Dale, the young couple returning to New Zealand in 1883. For 23 years the late Mrs Dale lived in Bushy Hill Street, removing to Wooded Hill, where her husband owned the farm at present occupied by Mr L. Peat, and resided there for 18 years. On the death of her husband 22 years ago Mrs Dale returned to Tapanui, where she erected a new home in

Northumberland Street, living there up to the time of her death.

Of a quiet and retiring disposition, Mrs Dale did not take an active part in public affairs, but was a keen horticulturalist and lover of her home. She spent many happy hours in her garden, and within a short time of her passing took an active interest in it. Those who were privileged to make her acquaintance will remember her as a kindly and hospitable lady. She is survived by three daughters and one son, viz: Mary (Mrs Clougher, Ohope, Bay of Plenty), Rose, Frances and William (Tapanui), to whom the sympathy of a wide circle of friends is extended. One son, Thomas, made the supreme sacrifice at Passchendaele in World War I, and another son, Charles, died at Greymouth two and a half years ago. The funeral took place to the Tapanui Cemetery on Wednesday, the services at the home and graveside being conducted by the Rev. F.H. Waldron.





Figure 17 - Headstone - William Dale, Sarah Dale, Edward Thomas Dale (memorial), Rose Dale, Frances Dale

### DESCENDANTS WILLIAM CHARLES DALE

GEN	1	2	3	4	5	6	TOTAL*
1.	Charles Dale 1884-1943	0	0	0	0	0	1
2.	Edward Thomas Dale 1886-1917	0	0	0	0	0	1
3.	Mary Dale 1888-1971	3	7	14	9	0	34
4.	William Dale 1890-1961	4	6	9	0	0	20
5.	Rose Dale 1892-1953	0	0	0	0	0	1
6.	Frances Dale 1894-1976	0	0	0	0	0	1
<b>TOTAL</b>	<b>6</b>	<b>7</b>	<b>13</b>	<b>23</b>	<b>9</b>	<b>0</b>	<b>58</b>

\*Totals include Generation 1

#### Corrections and updates:

If any member of the family finds an error or omission in this document, or is able to provide photographs, please contact Dale Hartle on email [mjhartle@xtra.co.nz](mailto:mjhartle@xtra.co.nz) in Levin, New Zealand.

While every effort has been made to ensure the accuracy of this information, there is bound to be mistakes and updates would be gratefully received.

+++++